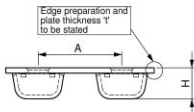
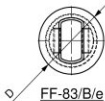


FF-81/e

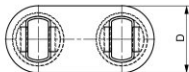


$$H = t + 77$$

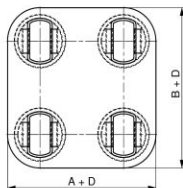
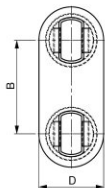
FF-82/A/e



FF-83/B/e



FF-84/A/B/e



- A = Transversal C-C distance
 B = Longitudinal C-C distance
 e = Identification letters for combination "plate thickness & diameter / edge preparation"

For GL: $D \geq 170 + 3$ (deckplate thickness - 10)

e	15/05/2008	PH	General Update	
d	17/01/2008	EN	General Update	
Mod.	Date	Check	Description	
Scale	1:8		Strength (kN):	Weight
				kg
				Material S355J2G3
				Finish Primed
	Tension	250	Shear	
	MSL	250		
	PL	313		
Drawing Size A4	BL	500		
CONTAINER TECHNICS N.V. Haven 219 - Emdenweg 27 - B-2030 ANTWERP tel: +32 3 546 41 00 - fax: +32 3 541 18 01 mailto: info@pontech.be www.containertechnics.com				Project
Flush ISO foundation				
Drawn	Check	Reference no.	Page	Mod.
Centers E			1	e
28/02/97				